

OEM MAXNIBP® Module Demonstration Kit (01-02-0260)

The NIBP Module Demonstration Kit is designed to provide the user with a complete, ready-to-use platform to assist during the evaluation and demonstration of CASMED's OEM NIBP modules.

Demonstration Software

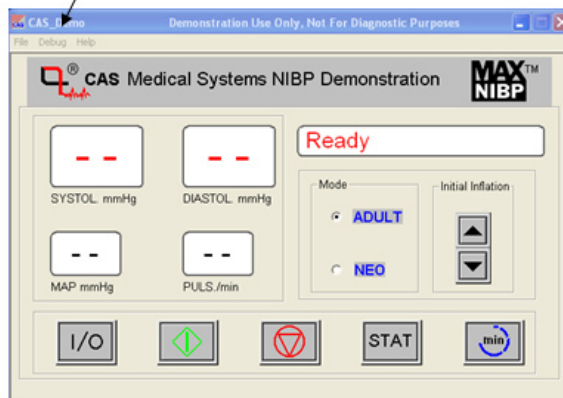
The demonstration kit software enables you to control a virtual blood pressure monitor display screen, allowing the CASMED OEM NIBP module to be evaluated independently of your medical device.

Virtual Main Display Screen

The virtual main display screen provides the user with control settings and viewing of NIBP measurements.

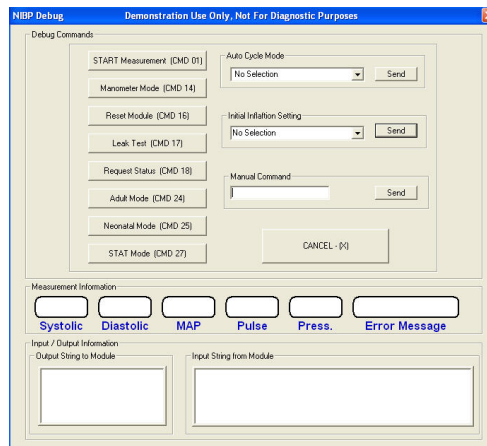
Control settings and measured values include:

- Mode (patient type)
- Initial inflation pressure
- Initiate STAT BP and timed BP measurement
- Measurements: Systolic, Diastolic, Mean Arterial Pressure (MAP) and Pulse Rate



Debug Menu

To access the low level command display, select DEBUG located in the top left hand corner of the main display screen. The debug screen allows the user to exercise and view the raw communications between the host computer and CASMED OEM NIBP module. The communications protocol is described in the module's communications protocol specification. See kit contents (pgs 3 & 4) for the communication protocol specific to your module type.



OEM MAXNIBP[®]

Module Demonstration Kit (01-02-0260) con't.

CAS OEM Engineering Support

Need technical support contact: oemengineering@casmec.com

Contact the OEM Engineering Support team if technical assistance is required during the CASMED module evaluation.

Our engineering team is ready to provide the technical support necessary to ensure complete and successful NIBP module integration into your medical device.

Supporting Documents and Information:

1. OEM MAXNIBP – Product Description
2. OEM MAXNIBP – Oscillometric BP Technique
3. OEM MAXNIBP – ND+ Module Accuracy
4. OEM MAXNIBP – Trusted Brand
5. OEM MAXNIBP – Design Function of Dual Pressure Transducers
6. Are NIBP modules approved for clinical use tested for performance during motion artifact?
7. Non-Invasive Blood Pressure Technology (NIBP): Comparative Study
Performance of the CAS Oscillometric Algorithm Compared Against Commercially Available NIBP Simulators


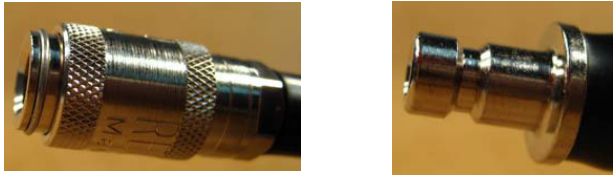
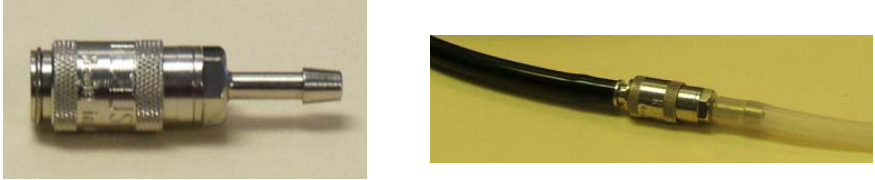

Ordering and Product Information:

NIBP OEM Module Demonstration Kit

Part Number: 01-02-0260

Contact: oemproductmanager@casmec.com

| (01-02-0260) The NIBP Module Demonstration Kit Contents and Descriptions: | Item Number |
|--|-------------|
| <p>NIBP Module Demonstration Kit Instructions</p> <p>Provides the information required to setup the NIBP hardware, complete electrical and mechanical connections and install/run the demonstration kit software.</p> | 21-03-0193 |
| <p>NIBP Module Demo CD</p> <ul style="list-style-type: none"> • Software provides a virtual main display screen and user level NIBP controls. • Debug Menu provides low level command display and enables user to exercise and view raw communications. <div data-bbox="440 846 899 1163" data-label="Image"> </div> <p>The Demo CD includes the following documents located in the "Manuals" folder.</p> <p>For Module Type: ND+</p> <ul style="list-style-type: none"> o ND+ Module Performance Specification, 21-07-0024 o ND+ Series NIBP Module Communications Protocol, 21-07-0025 o ND+ NIBP Module w/ECG Gating Performance Specifications, 21-07-0035 o ND+ NIBP Module w/ECG Gating Communications Protocol, 21-07-0036 <p>For Module Type: NE</p> <ul style="list-style-type: none"> o NE Series NIBP Module Performance Specification, 21-07-0046 o NE Series NIBP Module Communications Protocol, 21-07-0047 | 03-11-0072 |

| | |
|---|-------------------|
| <p>NIBP Interface Adapter Assembly</p> <p>Provides a power connection and enables (RS-232) serial communications</p> <ul style="list-style-type: none"> • 9 pin D connector for direct connect to PC compatible computer • 10 pin plug connector for insertion into 10 pin header on the NIBP module • Lead wires for connection to an external power supply  | <p>03-08-0133</p> |
| <p>10 ft. Straight Tube, Black, (1/8" ID)</p> <ul style="list-style-type: none"> • Pneumatic tubing providing an interconnection between the NIBP module and blood pressure cuff. • Bayonet tube fitting terminations are depicted below:  | <p>01-01-0597</p> |
| <p>Female Bayonet Fitting, 1/8" Tube</p> <p>Quick disconnect inflation tube coupling</p> <ul style="list-style-type: none"> • Barb side of connector fits into clear tubing of the NIBP module, opposite end connects to the 10 ft. straight tube male bayonet fitting.  | <p>27-03-0104</p> |
| <p>Adult UltraCheck® Reusable Blood Pressure Cuff</p> <p>Adult Regular, Range 26cm-35cm, Latex Free and Antimicrobial Treated</p>  | <p>US2635HP</p> |