

ACCESSORIES

For the Ami[®] Plus and Model 511 Monitors

**Ami Plus Monitor
ECG Patient Cable**



For Home Use
01-05-0429 (0.080 din)
For Hospital Use
01-05-0428 (0.060 din)

**Model 511 Monitor
ECG Patient Cable**



For Home Use
01-04-0178 (0.080 din)
For Hospital Use
01-04-0177 (0.060 din)

**Leadwires for
Reusable Electrodes**



One Pair
01-05-0005 (0.080 din) 24"
01-05-0015 (0.080 din) 40"

**Nellcor[®] DOC-10 10ft.
OxiMax[®] Patient Cable**



For use with the Model 511 Monitor
01-02-0183

Snap Leadwires



Three per Set
01-05-0019 (0.080 din) 24"
01-05-0494 (0.060 din) 36"

24" Snap Leadwires



One Pair
01-05-0007 (0.080 din)

24" Clip Leadwires



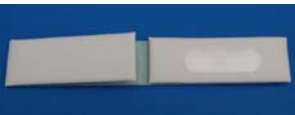
Three per Set
01-04-0182 (0.080 din)
01-04-0184 (0.060 din)

36" Clip Leadwires



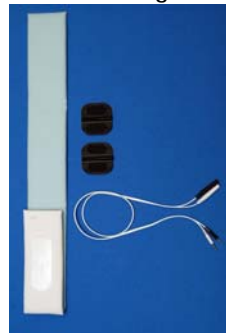
One Pair
01-04-0185 (0.080 din)

Electrode Retainer Belt



01-05-0003, One Belt

Home Monitoring Kit



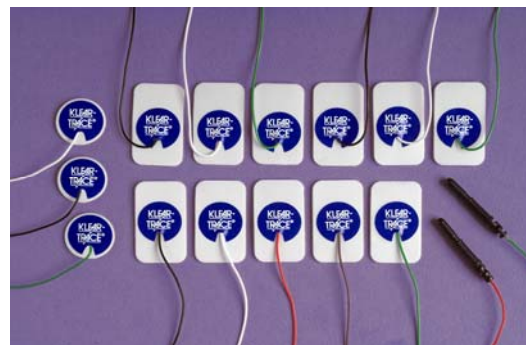
01-05-0010
retainer belts, reusable
electrode pairs, & 24"
leadwire pairs (0.080 din)

**Reusable Carbon
Electrodes**



01-05-0002 One Pair, 1.75" x 1.5"

Klear-Trace[®] Electrodes



01-01-0286 "2000" Short-term Neonatal/Infant/Pediatric
01-01-0508 "2500" Short-term Neonatal/Infant/Pediatric
01-01-0594 "2500-22" Short-term Neonatal/Infant/Pediatric, 22"
01-01-0288 "4800" Long Term Neonatal
01-01-0290 "4810" Long Term Neonatal/Infant/Pediatric